



## UNIVERSAL SINGLE CIRCUIT TRACK & ACCESSORIES STR4800

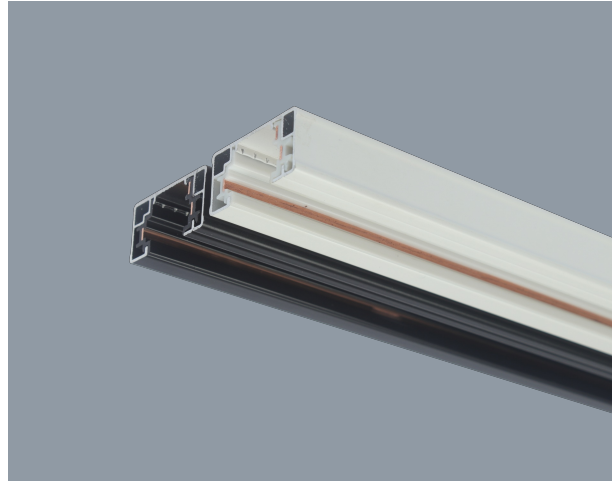
Single circuit track universal HALO type

### Application

Designed for decorative and creative retail applications

### Design Specifications

- Extruded aluminium profile, with quality powder coated finish
- Length 1 m or 2 m
- Complete with end cap and live end
- Track components: Straight joiner, Live end, Live centre feed, L-shaped joiner, T-shaped joiner, Cross joiner, Track joiner, Suspension kit
- Rating: TOTAL track capacity 10A, maximum (mass) load limit per track adaptor is 2kg

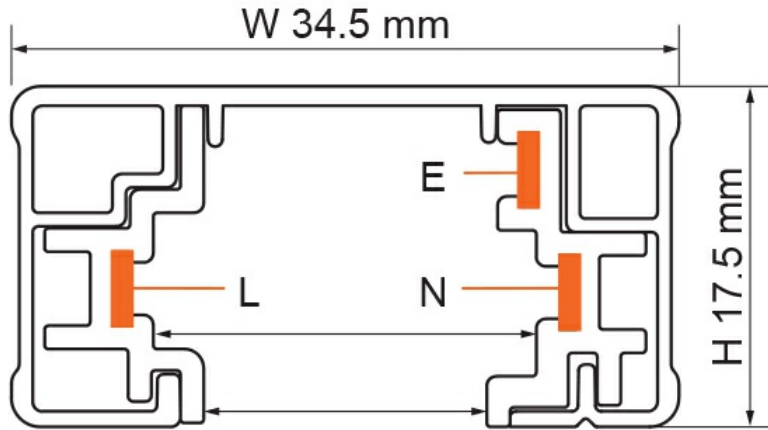


### Technical Specification

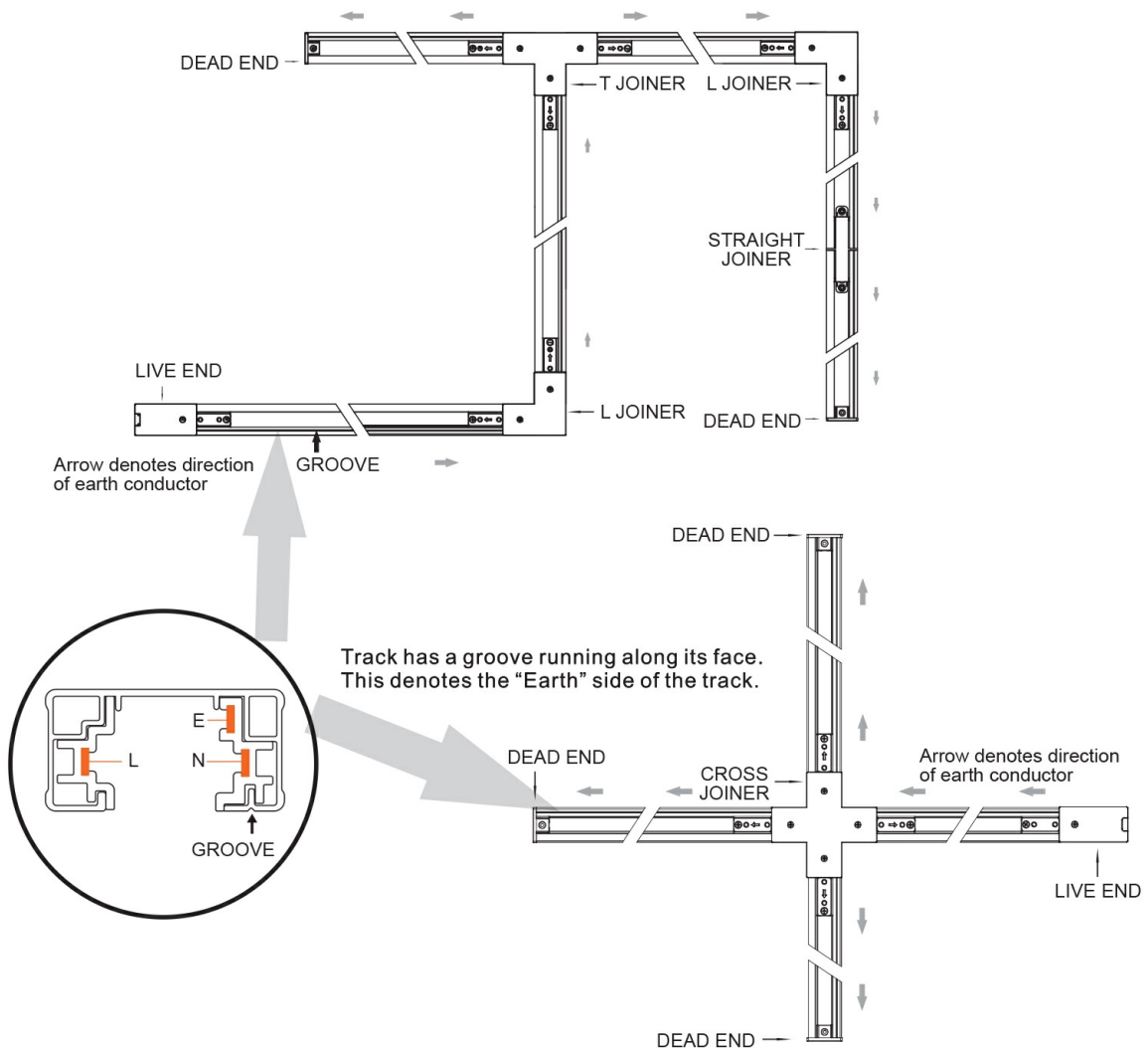
| Model No.    | Description                     | Input Voltage (V/AC) | Body Colour | Dimensions (mm) |
|--------------|---------------------------------|----------------------|-------------|-----------------|
| STR4800/1 WH | 1M TRACK WHITE                  | 240                  | WHITE       | 1000(L)         |
| STR4800/1 BK | 1M TRACK BLACK                  | 240                  | BLACK       | 1000(L)         |
| STR4800/2 WH | 2M TRACK WHITE                  | 240                  | WHITE       | 2000(L)         |
| STR4800/2 BK | 2M TRACK BLACK                  | 240                  | BLACK       | 2000(L)         |
| STR4801 WH   | STRAIGHT JOINER 76 x 35 x 17mm  | 240                  | WHITE       |                 |
| STR4801 BK   | STRAIGHT JOINER 76 x 35 x 17mm  | 240                  | BLACK       |                 |
| STR4802 WH   | LIVE END 106 x 35 x 17mm        | 240                  | WHITE       |                 |
| STR4802 BK   | LIVE END 106 x 35 x 17mm        | 240                  | BLACK       |                 |
| STR4803 WH   | LIVE CTR FEED 176 x 35 x 17mm   | 240                  | WHITE       |                 |
| STR4803 BK   | LIVE CTR FEED 176 x 35 x 17mm   | 240                  | BLACK       |                 |
| STR4804 WH   | L-SHAPE JOINER 106 x 106 x 17mm | 240                  | WHITE       |                 |
| STR4804 BK   | L-SHAPE JOINER 106 x 106 x 17mm | 240                  | BLACK       |                 |
| STR4805 WH   | T-SHAPE JOINER 176 x 106 x 17mm | 240                  | WHITE       |                 |
| STR4805 BK   | T-SHAPE JOINER 176 x 106 x 17mm | 240                  | BLACK       |                 |
| STR4806 WH   | CROSS JOINER 176 x 176 x 17mm   | 240                  | WHITE       |                 |
| STR4806 BK   | CROSS JOINER 176 x 176 x 17mm   | 240                  | BLACK       |                 |
| STR4808 WH   | TRACK ADAPTOR 33 x 33 x 40mm    | 240                  | WHITE       |                 |
| STR4808 BK   | TRACK ADAPTOR 33 x 33 x 40mm    | 240                  | BLACK       |                 |

Due to continued product and technology enhancements, data sourced from sal.net.au shall not form part of any contract and or technical performance guarantee unless expressly confirmed in writing by SAL at the time of order. Products are sold in accordance with [SAL Terms and Conditions of sale](#) and all images shown are for illustration purposes only and may vary from the actual colour or finish.

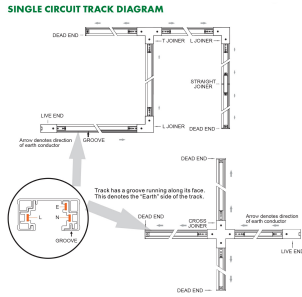
### Dimensions



### SINGLE CIRCUIT TRACK DIAGRAM

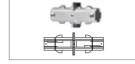


## Product Images



### Track Components

#### Straight Joiner



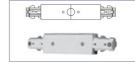
| Model No.  | Colour |
|------------|--------|
| STR4801 WH | White  |
| STR4801 BK | Black  |

#### Live End



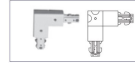
| Model No.  | Colour |
|------------|--------|
| STR4802 WH | White  |
| STR4802 BK | Black  |

#### Live Centre Feed



| Model No.  | Colour |
|------------|--------|
| STR4803 WH | White  |
| STR4803 BK | Black  |

#### L-shaped Joiner



| Model No.  | Colour |
|------------|--------|
| STR4804 WH | White  |
| STR4804 BK | Black  |

#### T-shaped Joiner



| Model No.  | Colour |
|------------|--------|
| STR4805 WH | White  |
| STR4805 BK | Black  |

#### Cross Joiner



| Model No.  | Colour |
|------------|--------|
| STR4806 WH | White  |
| STR4806 BK | Black  |

#### Track Adaptor



| Model No.  | Colour |
|------------|--------|
| STR4808 WH | White  |
| STR4808 BK | Black  |

Maximum (mass) load limit per track adaptor is 2kg

#### Suspension Kit



| Model No.   | Colour    |
|-------------|-----------|
| SS11512 (I) | Stainless |